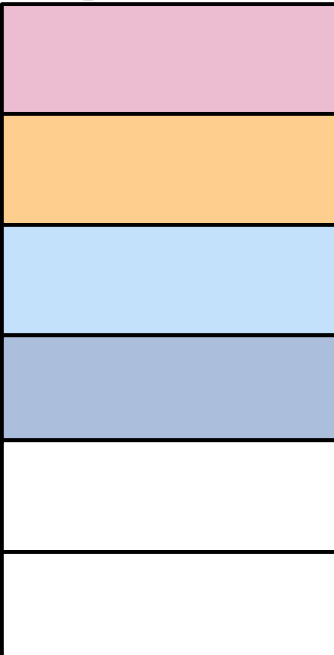


Spot Color Load

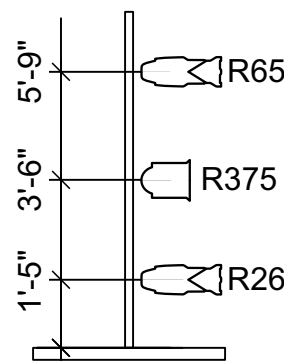
Colors are based on
near to far from operator

1. R33
2. R02
3. L201
4. R53
5. R132
6. R119

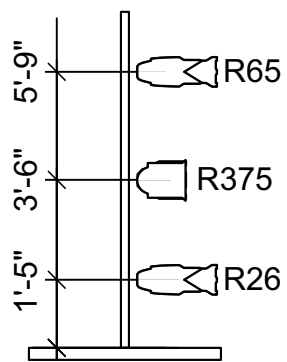


Ideal of Love

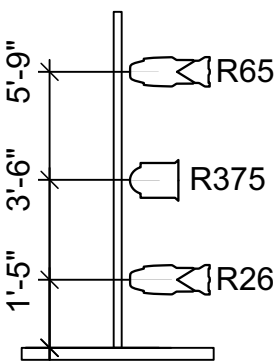
SL BOOM 1



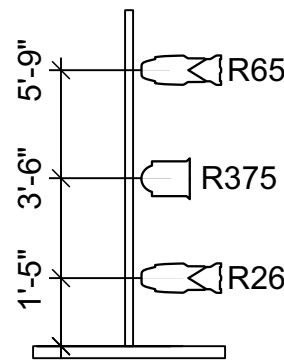
SL BOOM 2



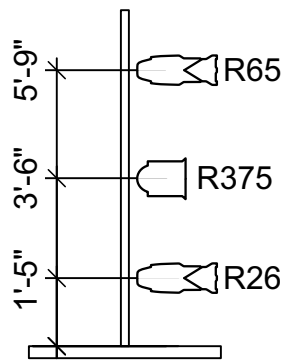
SL BOOM 3



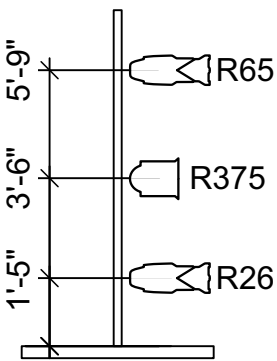
SR BOOM 1



SR BOOM 2

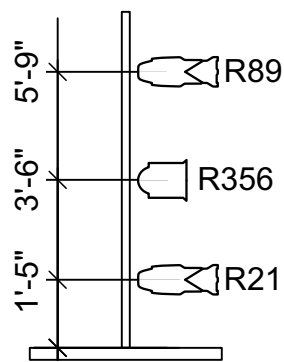


SR BOOM 3

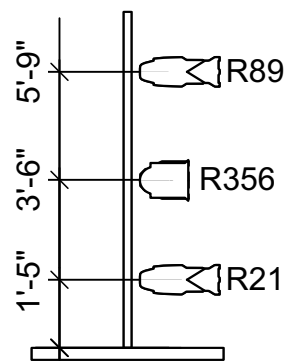


Words Unspoken

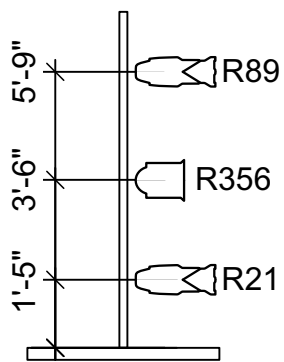
SL BOOM 1



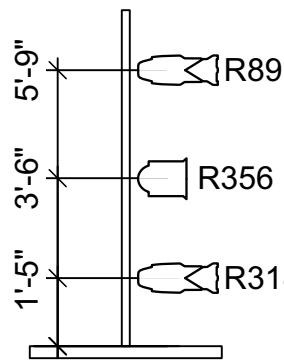
SL BOOM 2



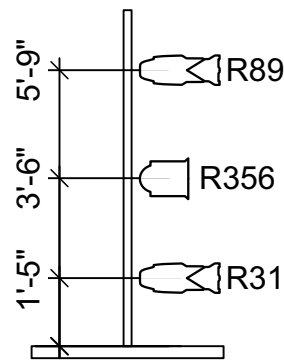
SL BOOM 3



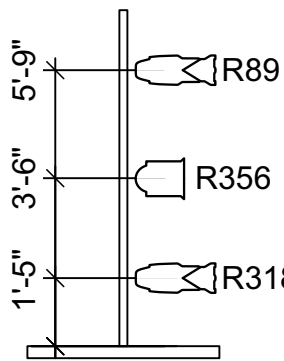
SR BOOM 1



SR BOOM 2

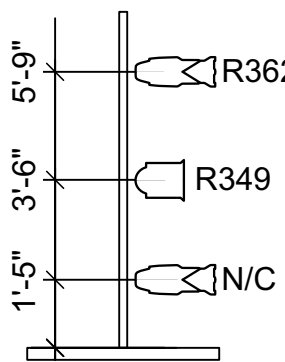


SR BOOM 3

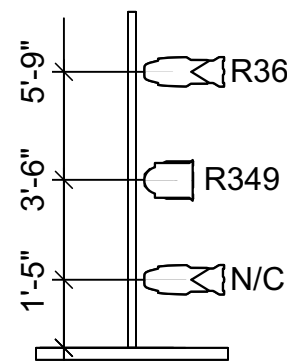


Empower

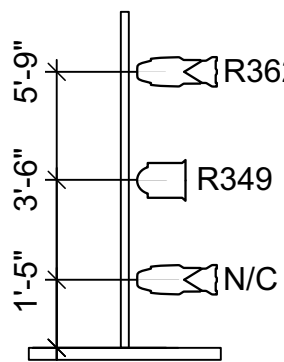
SL BOOM 1



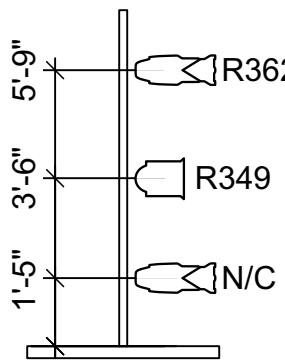
SL BOOM 2



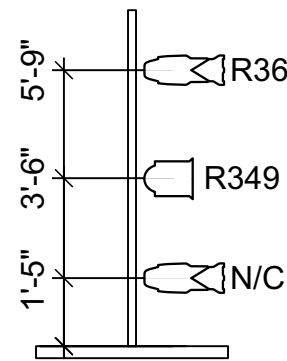
SL BOOM 3



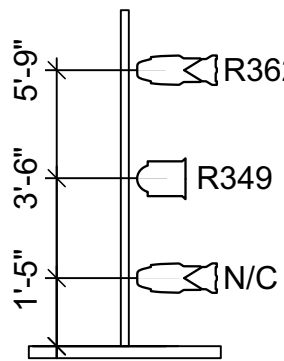
SR BOOM 1



SR BOOM 2

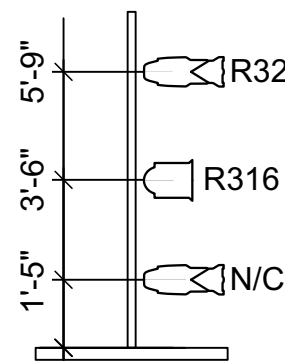


SR BOOM 3

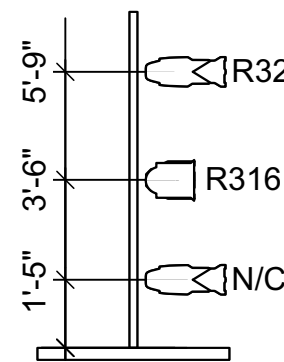


Shades of Impression

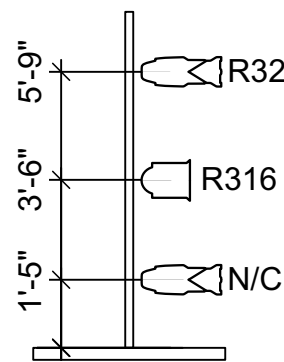
SL BOOM 1



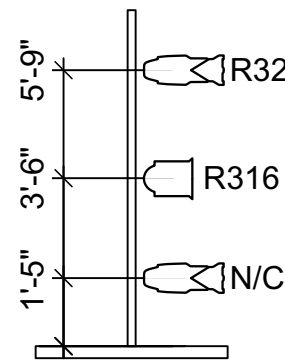
SL BOOM 2



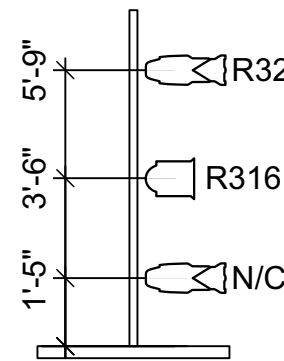
SL BOOM 3



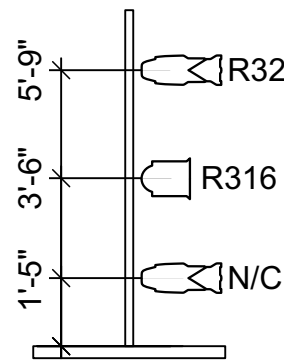
SR BOOM 1



SR BOOM 2



SR BOOM 3



Notes

Notes from rep plot:

1. ALL PIPES DRAWN ARE THE BOTTOM OF THE PAIR UNLESS NOTED.
2. ALL UNITS HANG ON BOTTOM PIPE UNLESS NOTED.
3. ALL YOKES HANG 90 DEGREES OUT FROM ELECTRIC TO FACILITATE FOCUS.
4. REP PLOT USES ALL SOFT FOCUS ON ELLIPSOIDS.
5. BLUE RUN LIGHTS INSTALLED PER SHOW MASTER ELECTRICIAN

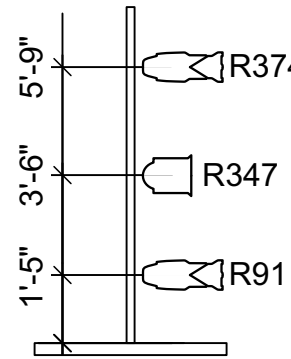
NOTE ON HOUSE LIGHTING
MANY OF THE HOUSELIGHTS ARE PROGRAMMED TO NEVER GO BELOW 12% BY THE UNISON ARCHITECTURAL SYSTEM. IF YOU NEED TO SHUT SOME OF THESE LIGHTS OFF FOR YOUR SHOW, A REQUEST MUST BE MADE TO THE RLD/RME A WEEK BEFORE LOAD-IN

Notes from show plot:

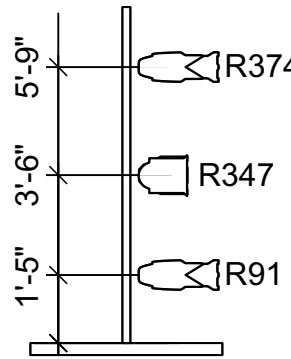
1. HAVE SPARE CUTS OF R119 IN BOTH 6.25" AND 7.5" CUTS
2. HAVE BLACK TACK, AND GAFF TAPE AVAILABLE FOR FOCUS
3. CHECK LIGHTWRIGHT PAPERWORK FOR TEXTURE, DENOTED ON PLOT IN LABEL LEGEND
4. COLOR CHORUS 72 IN 48 CH MODE
5. VL 880'S TO BE HUNG UNDER CATWALK OF LX 9 AND 10 AROUND HOUSE LIGHTS
6. ALL BOOM COLORS SHOWN ON PLATE 3
7. ALL BOOM FIXTURES RECEIVE A HALF HAT OR BARNDOR

Aurora Borealis

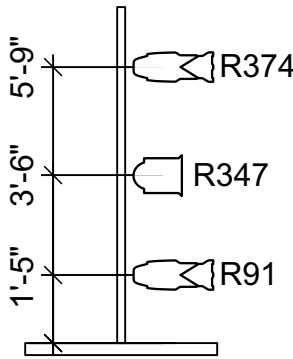
SL BOOM 1



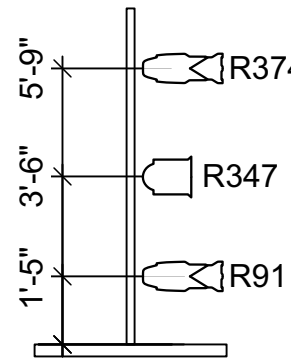
SL BOOM 2



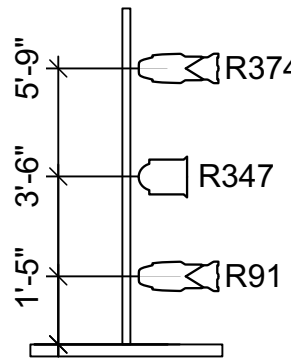
SL BOOM 3



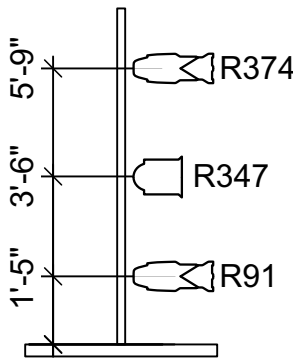
SR BOOM 1



SR BOOM 2

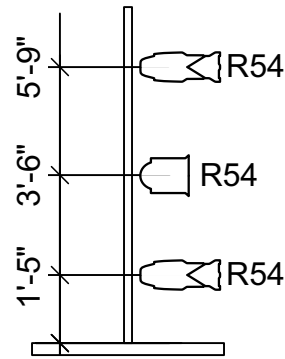


SR BOOM 3

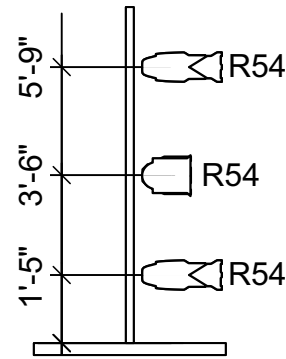


Homemade

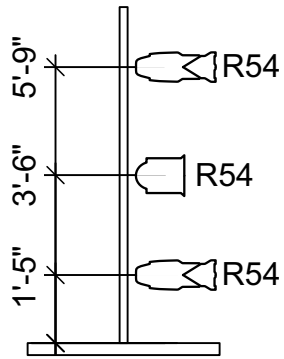
SL BOOM 1



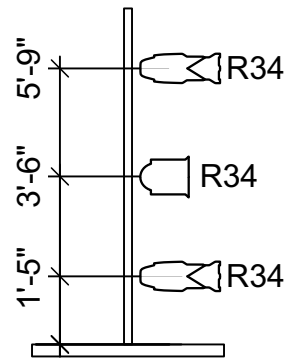
SL BOOM 2



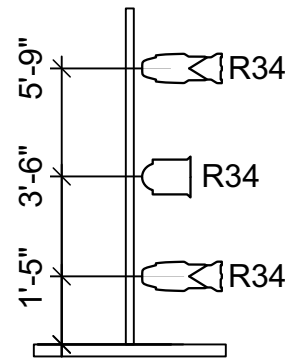
SL BOOM 3



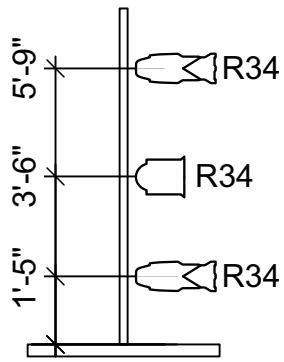
SR BOOM 1



SR BOOM 2

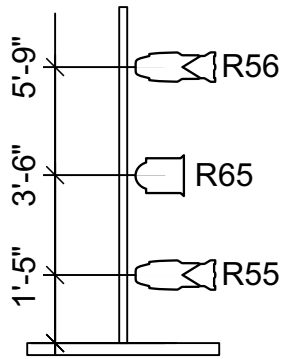


SR BOOM 3

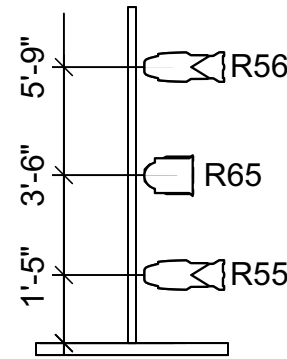


Unforgotten

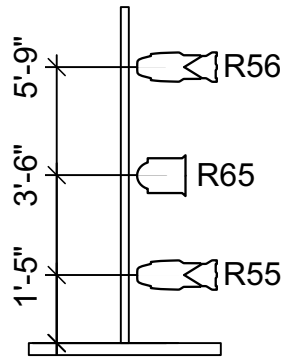
SL BOOM 1



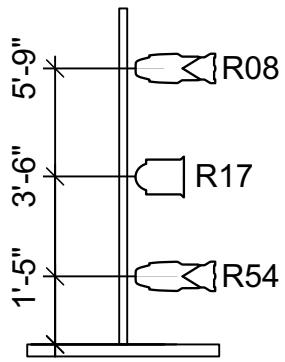
SL BOOM 2



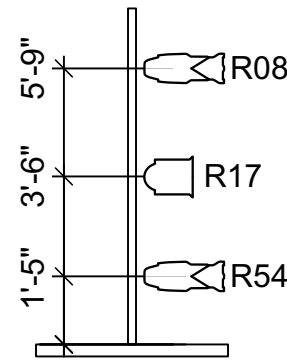
SL BOOM 3



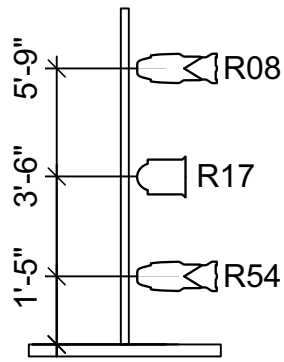
SR BOOM 1



SR BOOM 2

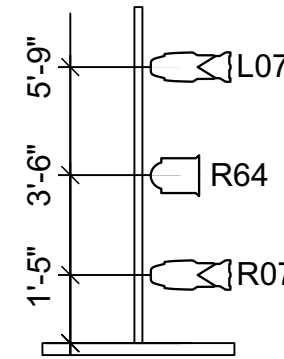


SR BOOM 3

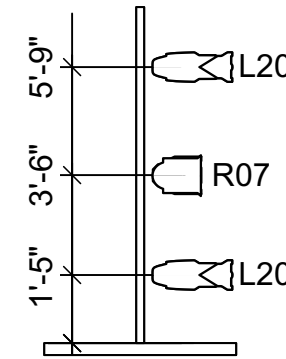


Ethereal Relation

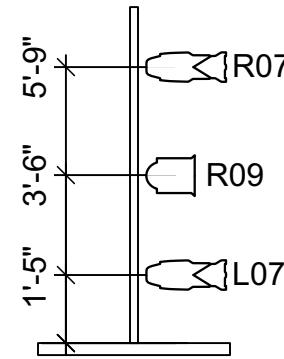
SL BOOM 1



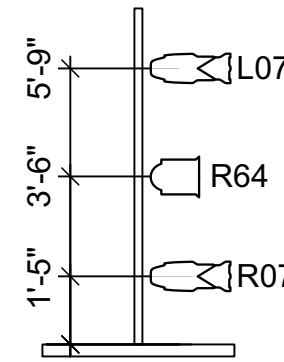
SL BOOM 2



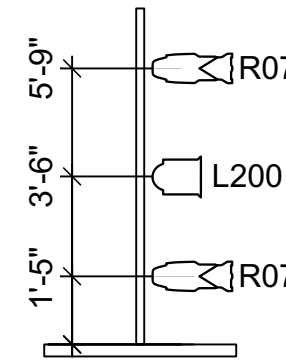
SL BOOM 3



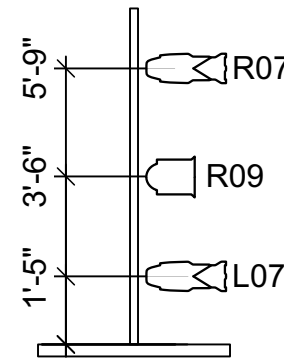
SR BOOM 1



SR BOOM 2



SR BOOM 3



Choreo Showcase 2021

DIRECTOR: SHAUNA STEELE
LIGHTING DESIGNER: WILLIAM BAKER
ASSOCIATE LIGHTING DESIGNERS:
WILLIAM MECKSTROTH
BELLA PFEIFFER
MASTER ELECTRICIAN: VINCENT VANDELEEST
AME/PROGRAMMER: ANDREW GANGE
FACULTY ADVISOR: KEVIN LAWSON
CCM RESIDENT ME: GREG FALCIONE

By Piece Booms

Date: 9/27/21
Scale: 1/4"=1'0"
Drawn By: WEB

Plate:
3
of 3

willbdesigns.com
248-921-8488